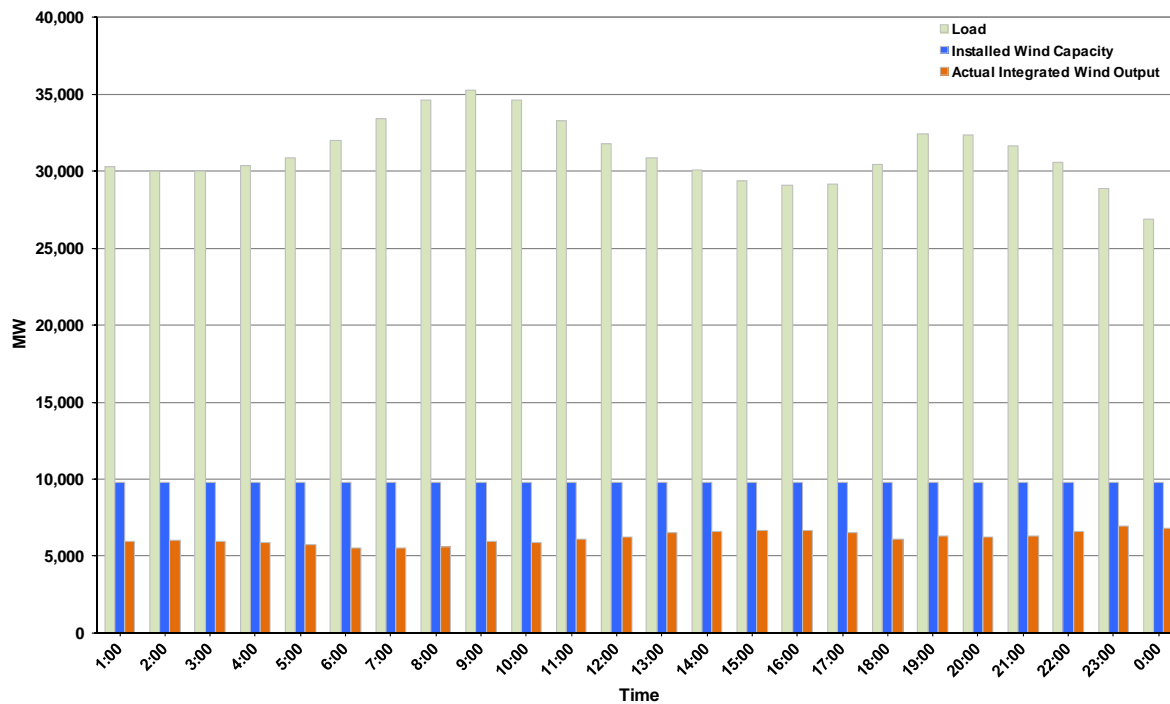




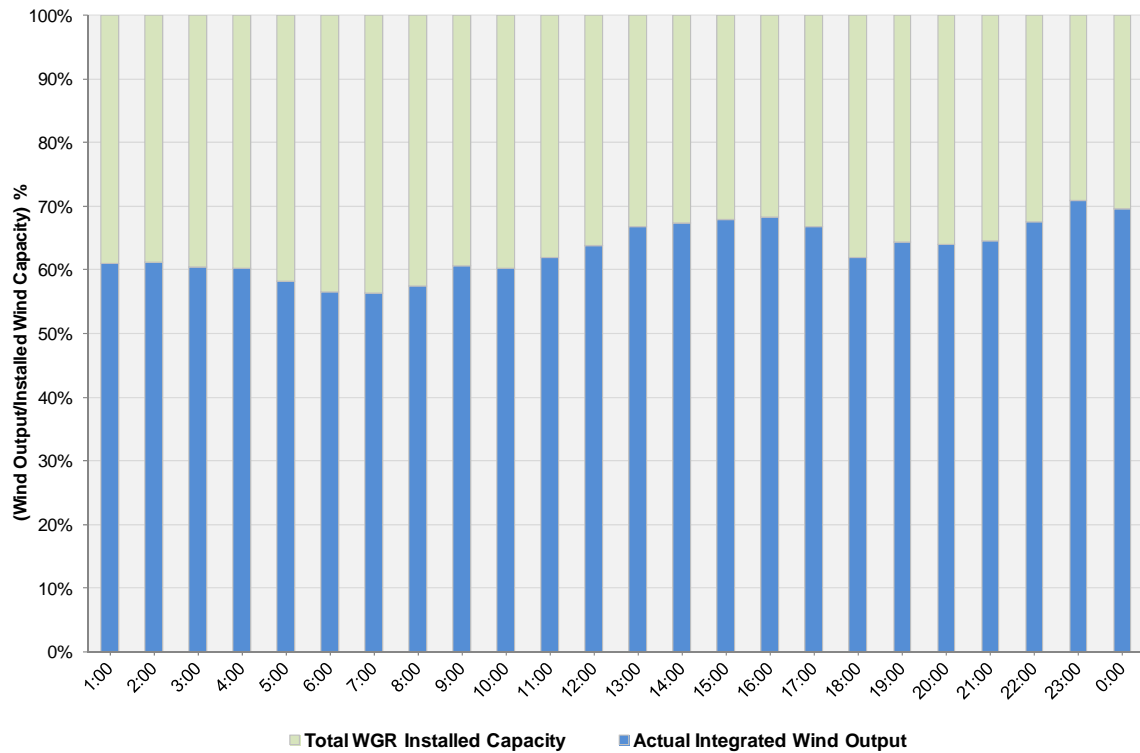
ERCOT Grid Operations Wind Integration Report: 01/15/12

Peak Load	35,286 MW
Load Peak Hour (HE)	09
Wind over Peak	5,933 MW
Wind Record 10/07/11	7,400 MW
Max Wind Value	7,063 MW
Wind Peak Time	22:50
Wind Integration %	25.07%

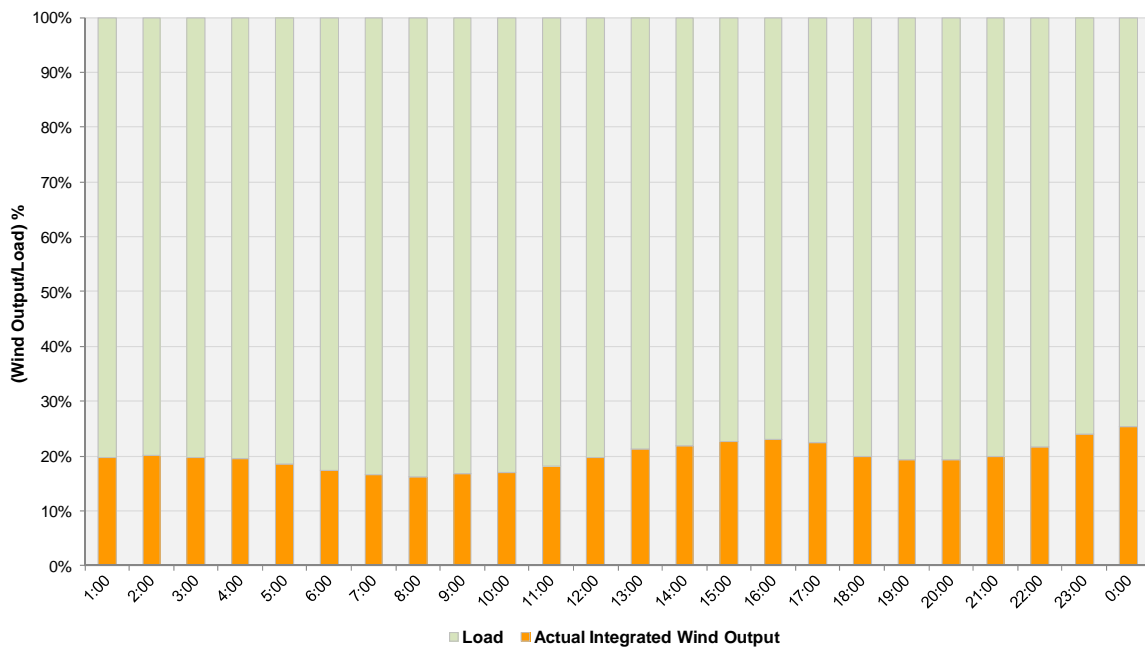
Hourly Average Actual Load vs. Actual Wind Output
01-15-2012



Actual Wind Output as a Percentage of the Total Installed Wind Capacity
01-15-2012



Actual Wind Output as a Percentage of the ERCOT Load
01-15-2012



ERCOT Load vs. Actual Wind Output 1/8/2012 - 1/15/2012

